

MONTHLY MEMBERSHIP PROGRESS REPORT

LOCATION NEW ZEALAND

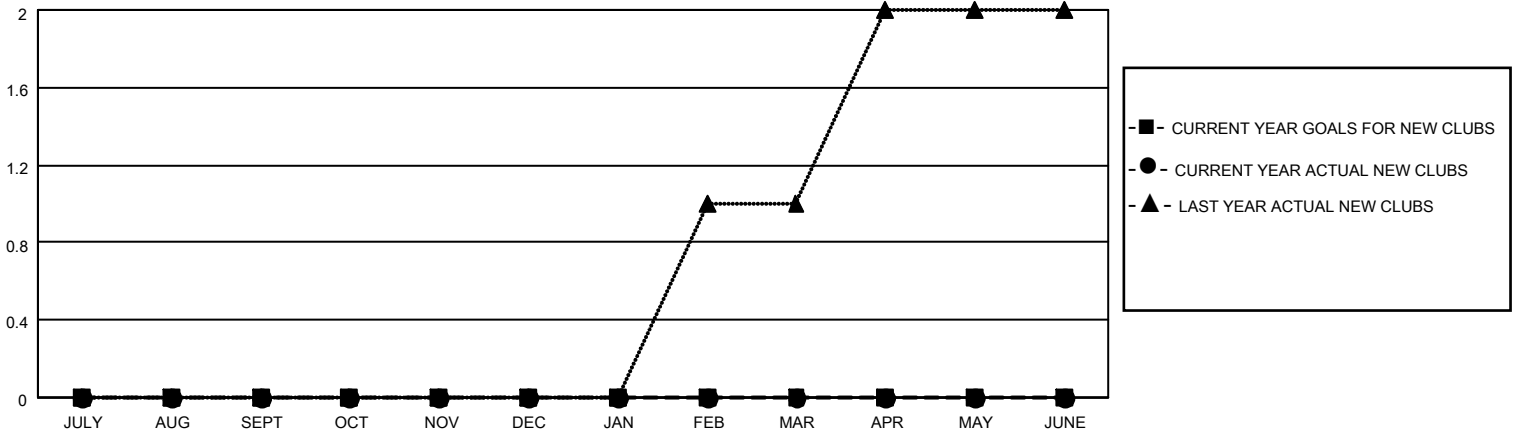
District 202 K

Results as of: 3/31/2022

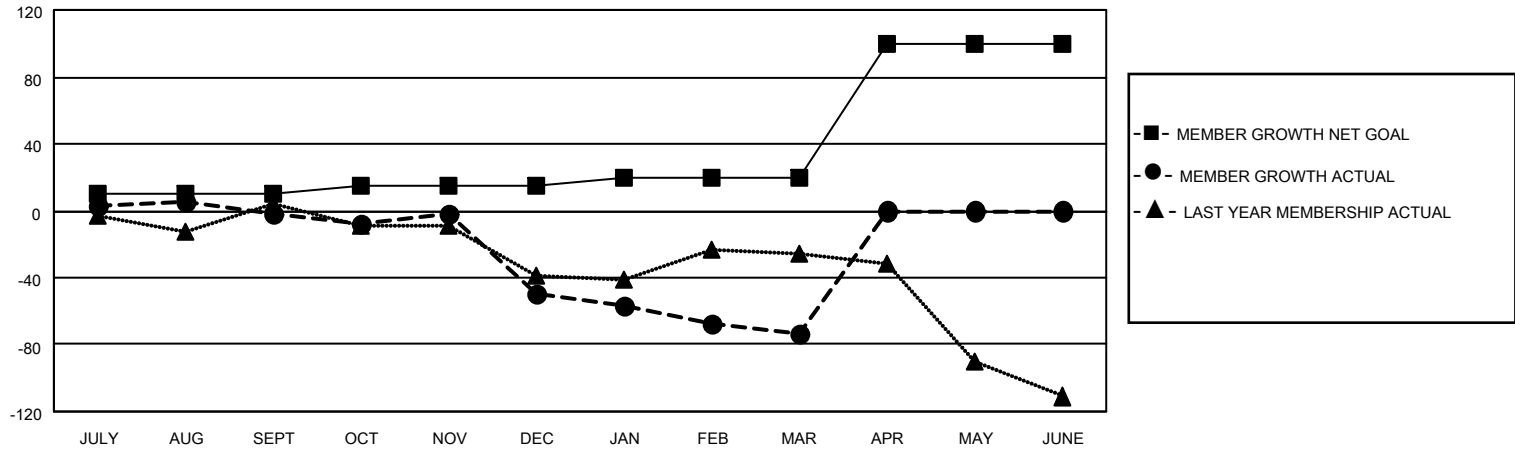
Clubs			
RESULTS FOR 2021-2022			
QUARTER	NEW CLUB GOAL	NEW CLUBS	DROPPED CLUBS
JULY/AUG/SEPT	0	0	1
OCT/NOV/DEC	0	0	1
JAN/FEB/MAR	0	0	3
APR/MAY/JUNE	0	0	0

Members			
RESULTS FOR 2021-2022			
QUARTER	MEMBER GROWTH NET GOAL	MEMBER GROWTH ACTUAL	DROPPED MEMBERS ACTUAL (including transfers)
JULY/AUG/SEPT	10	27	20
OCT/NOV/DEC	5	28	68
JAN/FEB/MAR	5	13	31
APR/MAY/JUNE	80	0	0

GOALS AND ACTUAL NEW CLUBS CUMULATIVE



GOALS AND ACTUAL MEMBERS CUMULATIVE



DROPPED CLUBS: 5

23 CLUBS OF 67 ADDED 1 OR MORE NEW MEMBERS

GENDER DISTRIBUTION

MALE	785 (63.61%)
FEMALE	449 (36.39%)
NON BINARY	0 (0.00%)
PREFER NOT TO ANSWER	0 (0.00%)

DROPPED MEMBERS

DECEASED	13
CLUB CANCELLED	4
OTHER	102
TOTAL	119

[CLICK HERE FOR CUMULATIVE MEMBERSHIP DATA](#)

TOTAL FAMILY UNIT MEMBERS	197
FAMILY MEMBERS PAYING HALF DUES	100